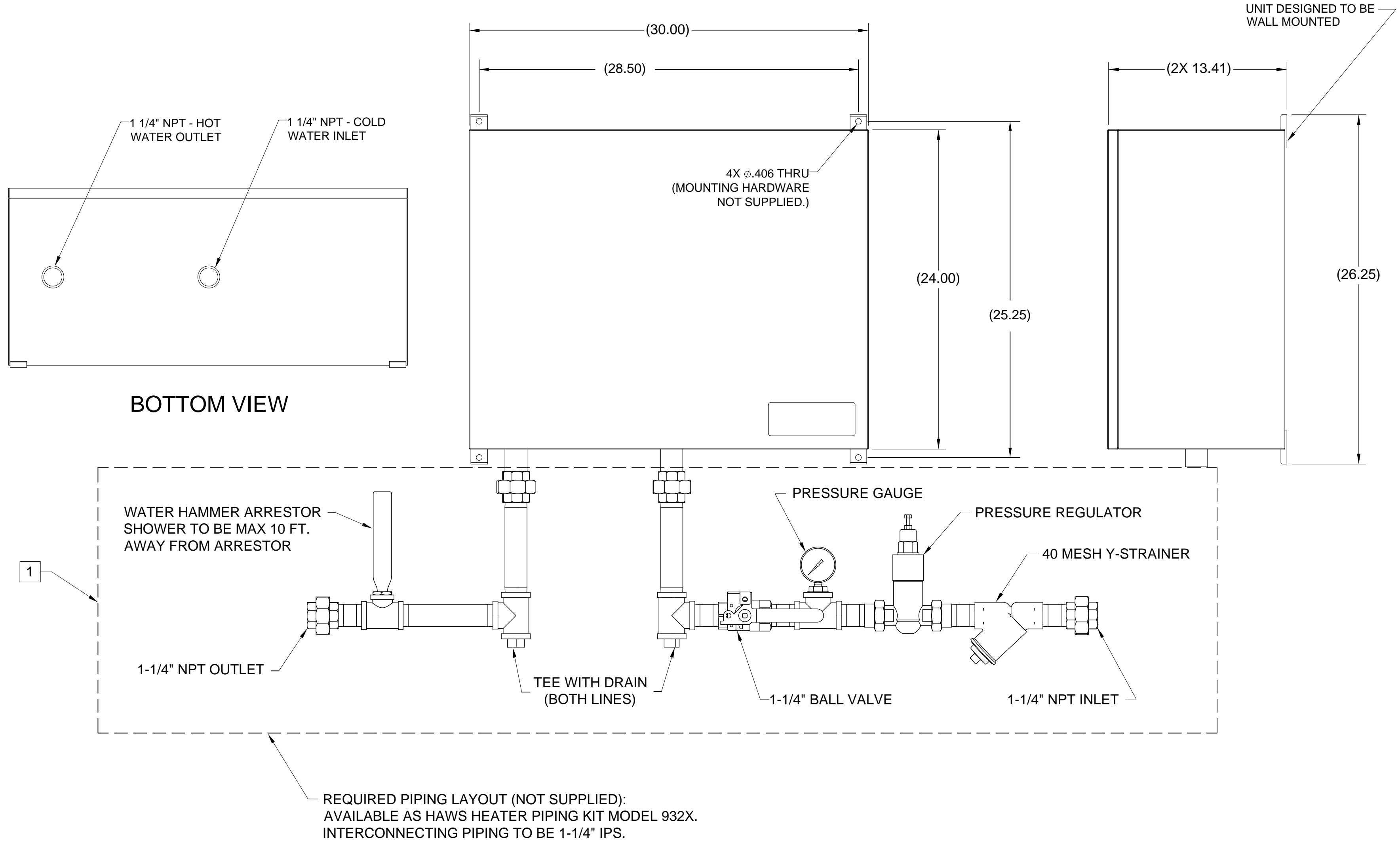


NOTES:

1. ITEMS SHOWN DASHED (IN BOX) ARE SHOWN FOR REFERENCE ONLY AND ARE NOT SUPPLIED. MANUFACTURER REQUIRES ALL COMPONENTS TO PROTECT UNIT, AND PROVIDE FUTURE SERVICEABILITY. INTERCONNECTING PIPING TO BE 1-1/4" IPS.
2. REFER TO OWNER'S MANUAL FOR INSTALLATION INSTRUCTIONS
3. DESIGNED FOR WALL MOUNTED INSTALLATION



| | | | | | |
|---|--|---|--|---------------------|--|
|  | | 1455 KLEPPE LANE SPARKS, NEVADA 89431 (775) 359-4712 FAX (775) 359-7424 E-MAIL: HAWS@HAWS.CO.COM WEBSITE: WWW.HAWS.CO.COM | | | |
| | | ECN NO. 5318 DRAWN: VWC APPROVED: DP | REVISED PER ECN: 5517 DATE: 1-30-14 DATE: 02/13/20 | BY: FV CHK'D: LF | MODEL(S) 9326 AND 9327 |
| SCALE: N/A | | | DRAWING TYPE: INSTALLATION | SIZE: A | PART NUMBER 0002080089.D REVISION 4 |
| SHEET 1 OF 1 | | | | | |